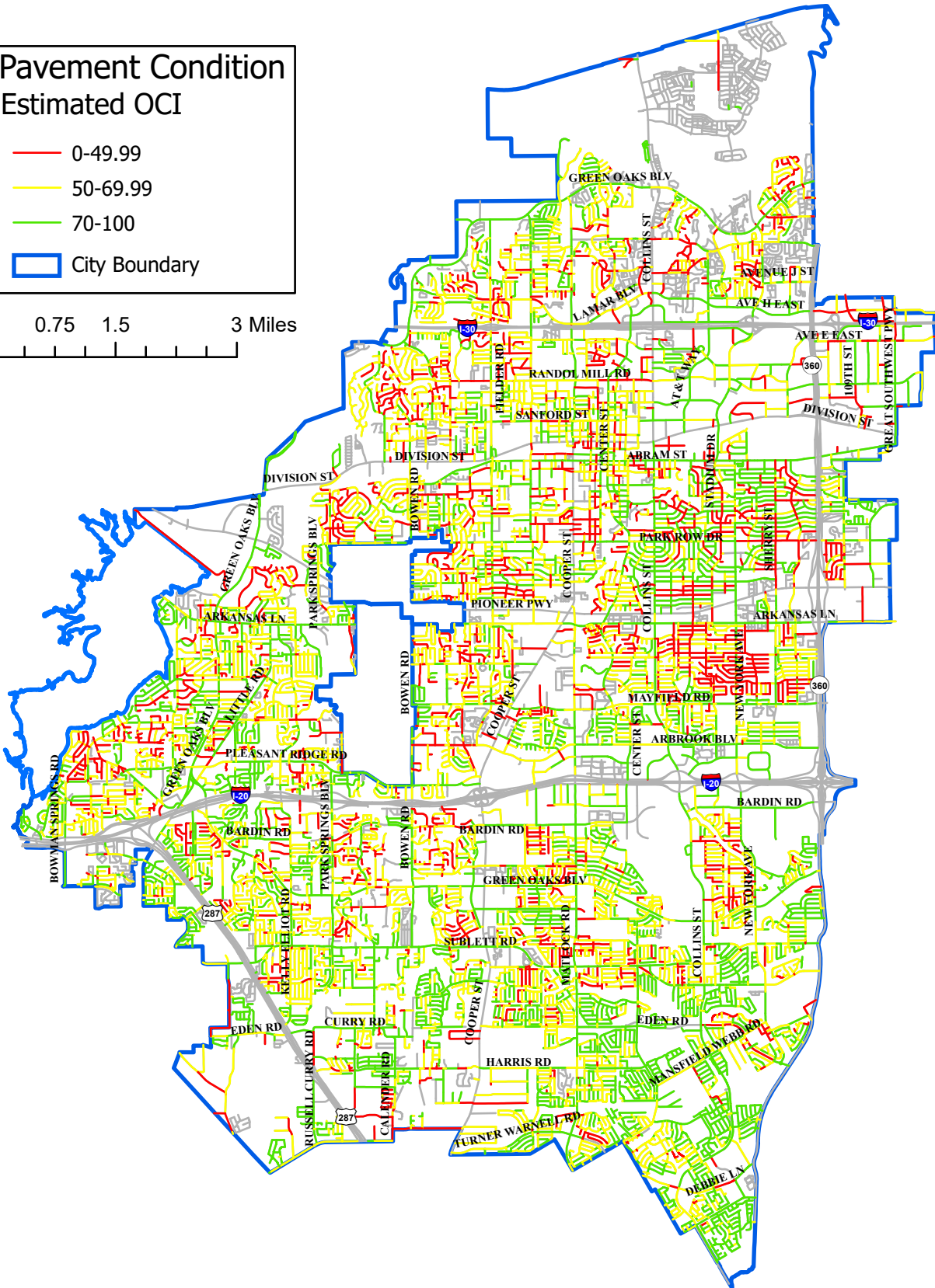


Pavement Condition Estimated OCI

- 0-49.99
- 50-69.99
- 70-100
- City Boundary

0 0.75 1.5 3 Miles



Street Condition Map Overall Condition Index (OCI)

Provided by Information Services
Public Works

2022



Scan/Click
For Interactive Map

DISCLAIMER:
The City of Arlington uses a grading system for streets based on the Overall Condition Index (OCI). Each street is given a grade from 0-100 based on the condition of the street. The OCI allows for appropriate prioritizing of streets for reclamation or rebuild. This also allows for more accurate cost estimation and budget forecasting. Each year, one third of the city streets are analyzed through a contractor, Data Transfer Solutions, to provide this data. Although every effort was made to ensure the accuracy of this data, no such guarantee is given or implied.

Date Exported: 2022-12-28 8:44 AM